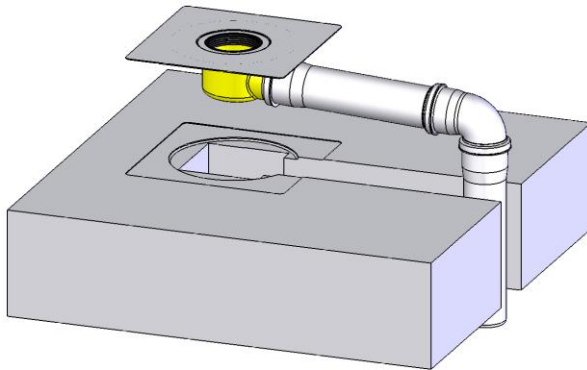


Fitting instructions for all  
Sita balcony outlets, extension units and accessoires



## Contents

General information .....	3
1. Sita balcony outlet with connection sleeve.....	4
2. Sita balcony outlet with screw-on-flange.....	6
3. Sita balcony outlet with balcony outlet grating.....	8

### General instructions

When installing flat roof drainage elements, the following regulations, amongst others, must be observed:

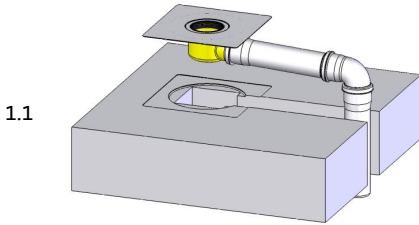
DIN EN 12056-3, DIN 1986-100, DIN 1986-3, DIN 18531, DIN 18195, DIN 18234, flat roof guidelines

Some important points of these systems of rules are listed below:

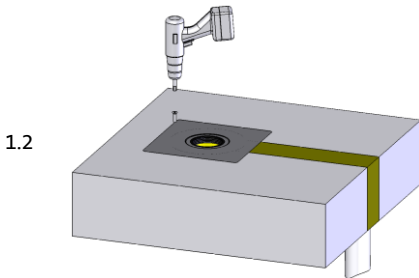
- Roof outlets are to be fitted at the lowest point of a roof.
- In the case of steel trapeze profile substructures, penetrations are to be reinforced by a strengthening sheet.
- The basic body is to be joined with the substructure.
- A skewing of the extension unit through relative movements of the roof construction must be prevented (e.g. through mechanical fixing of the unit).
- The flanges of the roof outlets and extension units are to be installed
- Roof outlets must be freely accessible for maintenance purposes.
- Roof outlets and the connected pipelines have to be protected against "sweating", where appropriate, with e.g. aluminium-coated rock wool.
- In the case of waterproofing seals of only one layer and/or loosely laid, then screw-on-flange joints must be installed with permanently compatible material of the same type as the waterproofing (or a suitable elastomer) fitted on both sides.
- The bolts of screw-on-flange joints must be checked and tightened at least three times during the course of the fitting work, using a torque wrench.
- Roof outlets have to be serviced at least twice per year.

## Fitting instruction

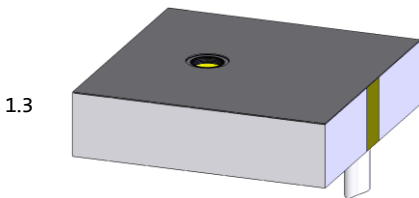
### 1. Sita balcony outlet with connection sleeve



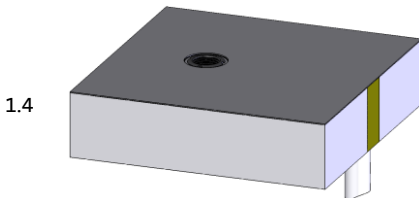
Mount the roof outlet to the proposed roof section of the roof area.



The balcony outlet needs to be fixed mechanically in the substructure. For protection against condensation are the roof and balcony outlets and the connected pipe, if necessary, to be protected.



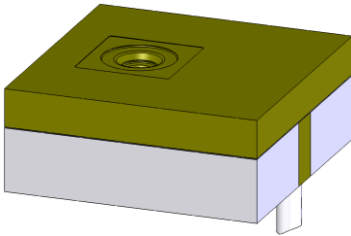
Glue or weld the vapour barrier with the flange connection or the connection sleeve of the balcony outlet together.



Insert the angled sealing ring for back flow resistance in the roof outlet body.

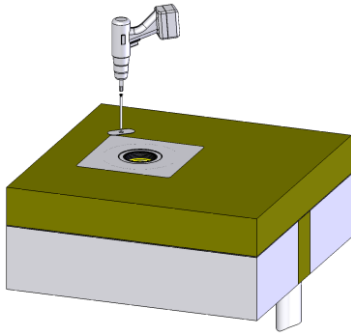
## Fitting instruction

1.5



Apply the thermal insulation and cut out the shape of the extension unit.

1.6

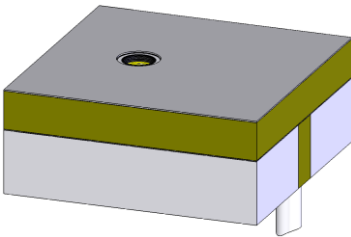


Trim the extension unit if necessary, so that the flow-cross section with angled roof and balcony outlets will be preserved.

Reap the angled sealing ring inside and the extension element in the lower area with the enclosed lubricant.

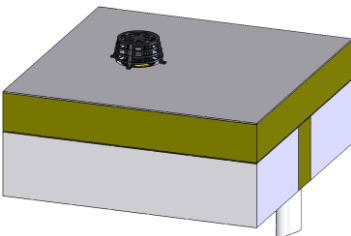
Slide the extension unit through the angled sealing ring and fasten it mechanically to the substructure.

1.7



Glue or weld the roof waterproofing with the flange connection or the connection sleeve of the extension unit together.

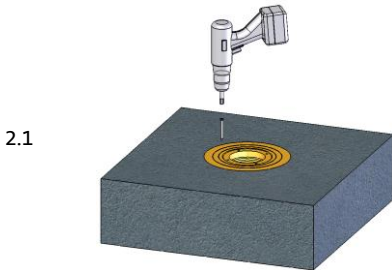
1.8



Put the dome grate from above into the extension unit and engage it in the fixing ring.

## Fitting instruction

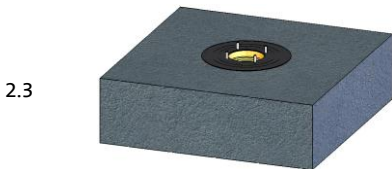
### 2. Sita balcony outlet with screw-on-flange



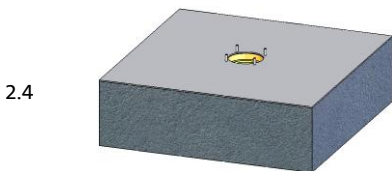
Put the SitaCompact screw-on-flange balcony outlet or the extension unit in the existing roof construction and screw it through the polyurethane flange, outside of the flange, to the ground.



Screw the enclosed threaded pins into the, in the drain body foam embedded, threaded insert ring.



Lay the large connection sleeve on the threaded studs on the drain body.  
In case of a bituminous sealing the bituminous membranes are welded directly to the drain body.

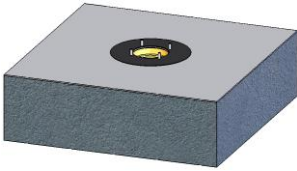


Set the position of the roof sheet above the drain body.

Use the small sealing sleeve as a template for the hole pattern and the inlet funnel.  
Punch The hole pattern with a punch ( $\varnothing 6$  mm) and cut out the hole for the inlet pot and place it over the threaded pins on the sealing sleeve. By flanging several roofing membranes these always have to be lead up to the inlet pot. A seam overlap of the roof covering in the flange area is not allowed.

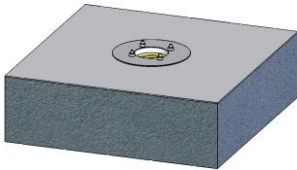
## Fitting instruction

2.5



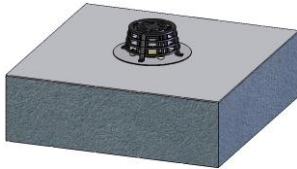
Lay the small sealing sleeve over the threaded studs onto the seal. With a bituminous seal a sealing sleeve is not provided. The roof track have to be preheated before flanging.

2.6



Lay the flange over the threaded pins onto the sealing sleeve. Put the spring washers and hex nuts on the threaded pins and tighten diagonally with a maximum torque of 8 Nm. According to DIN a loose- /thrust-flange construction must be controlled and retorqued at least three times in a time course of > 24 hours.

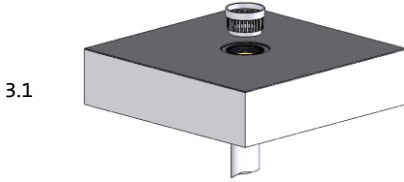
2.7



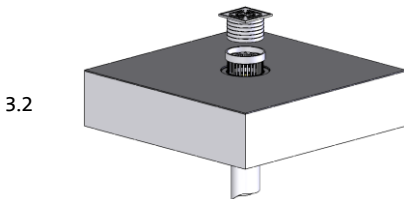
The dome grate can now be inserted into the flange.

## Fitting instruction

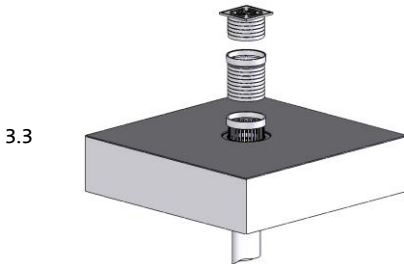
### 3. Sita balcony outlet with balcony outlet grating



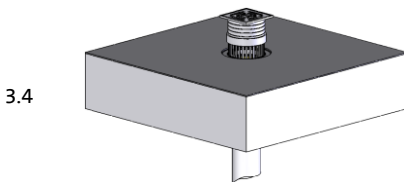
Plug the inlet filter grill of the SitaCompact balcony outlet grating into the SitaCompact balcony outlet or the SitaCompact extension unit.



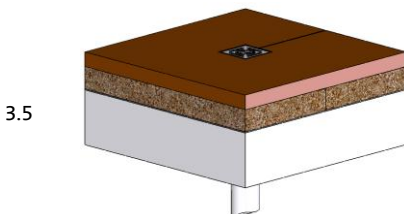
Determine The height of the terrace flooring. At heights lower than 105 mm the balcony outlet grating needs to be shortened.



At heights above 105 mm the SitaHeight adjustment unit can be putted between the inlet filter grill and the balcony outlet grating.



Plug the balcony outlet grating into the intake of the inlet filter grill.



The terrace decking can be applied to the roof surface.

## Fitting instruction

Notes:





Für gutes Wetter im Bau.

Sita Bauelemente GmbH

Ferdinand-Braun-Straße 1

D-33378 Rheda-Wiedenbrück

Phone +49 (0) 2522-8340-0 ◦ Fax +49 (0) 2522-8340-100

E-Mail: [info@sita-bauelemente.de](mailto:info@sita-bauelemente.de) ◦ [www.sita-bauelemente.com](http://www.sita-bauelemente.com)



Valid: 06.2011

Subject to technical changes, even without notice.